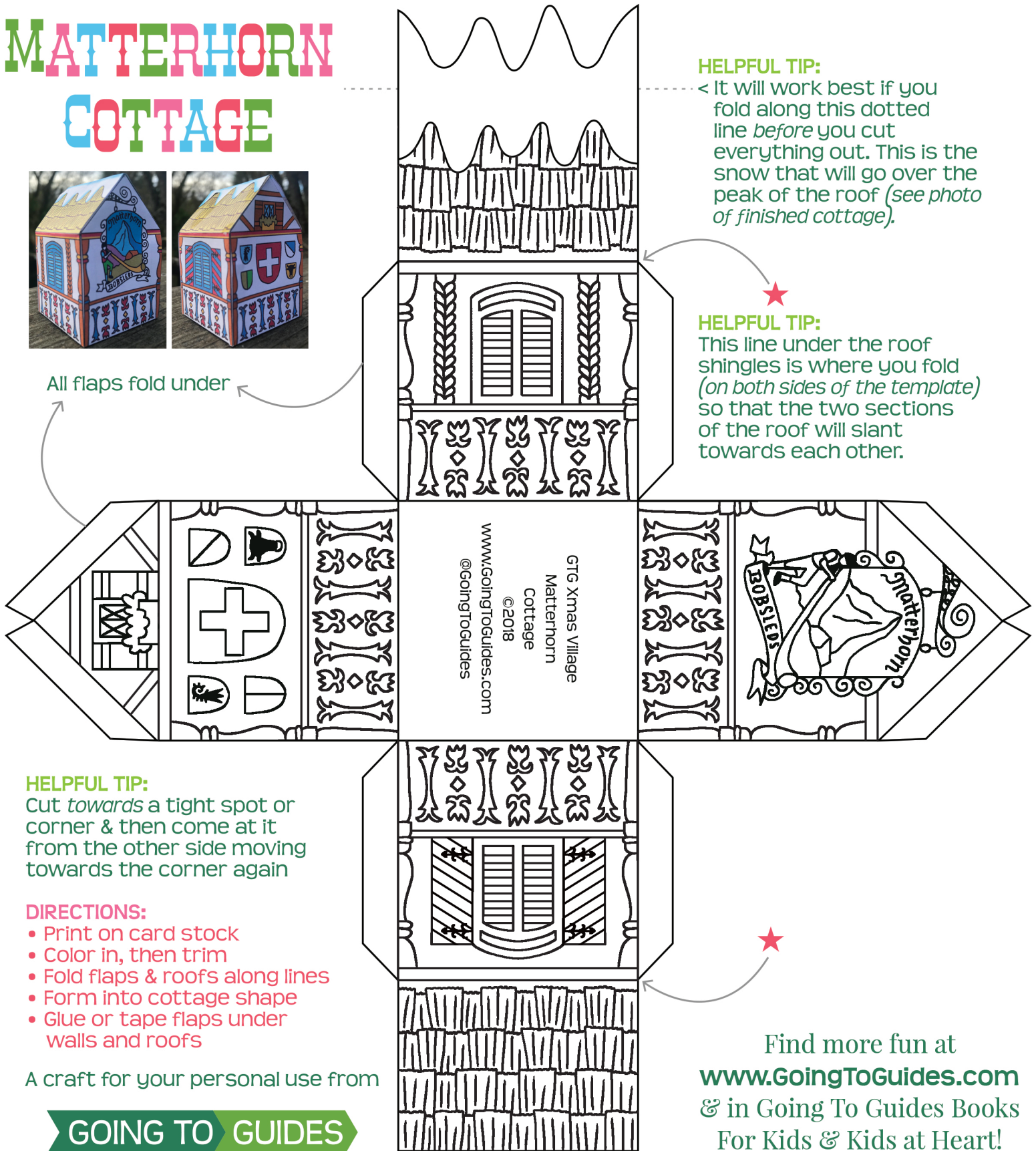




MATTERHORN COTTAGE



All flaps fold under



HELPFUL TIP:

< It will work best if you fold along this dotted line *before* you cut everything out. This is the snow that will go over the peak of the roof (see photo of finished cottage).

HELPFUL TIP:

This line under the roof shingles is where you fold (on both sides of the template) so that the two sections of the roof will slant towards each other.

HELPFUL TIP:

Cut *towards* a tight spot or corner & then come at it from the other side moving towards the corner again

DIRECTIONS:

- Print on card stock
- Color in, then trim
- Fold flaps & roofs along lines
- Form into cottage shape
- Glue or tape flaps under walls and roofs

A craft for your personal use from



Find more fun at
www.GoingToGuides.com
& in Going To Guides Books
For Kids & Kids at Heart!





MATTERHORN COTTAGE



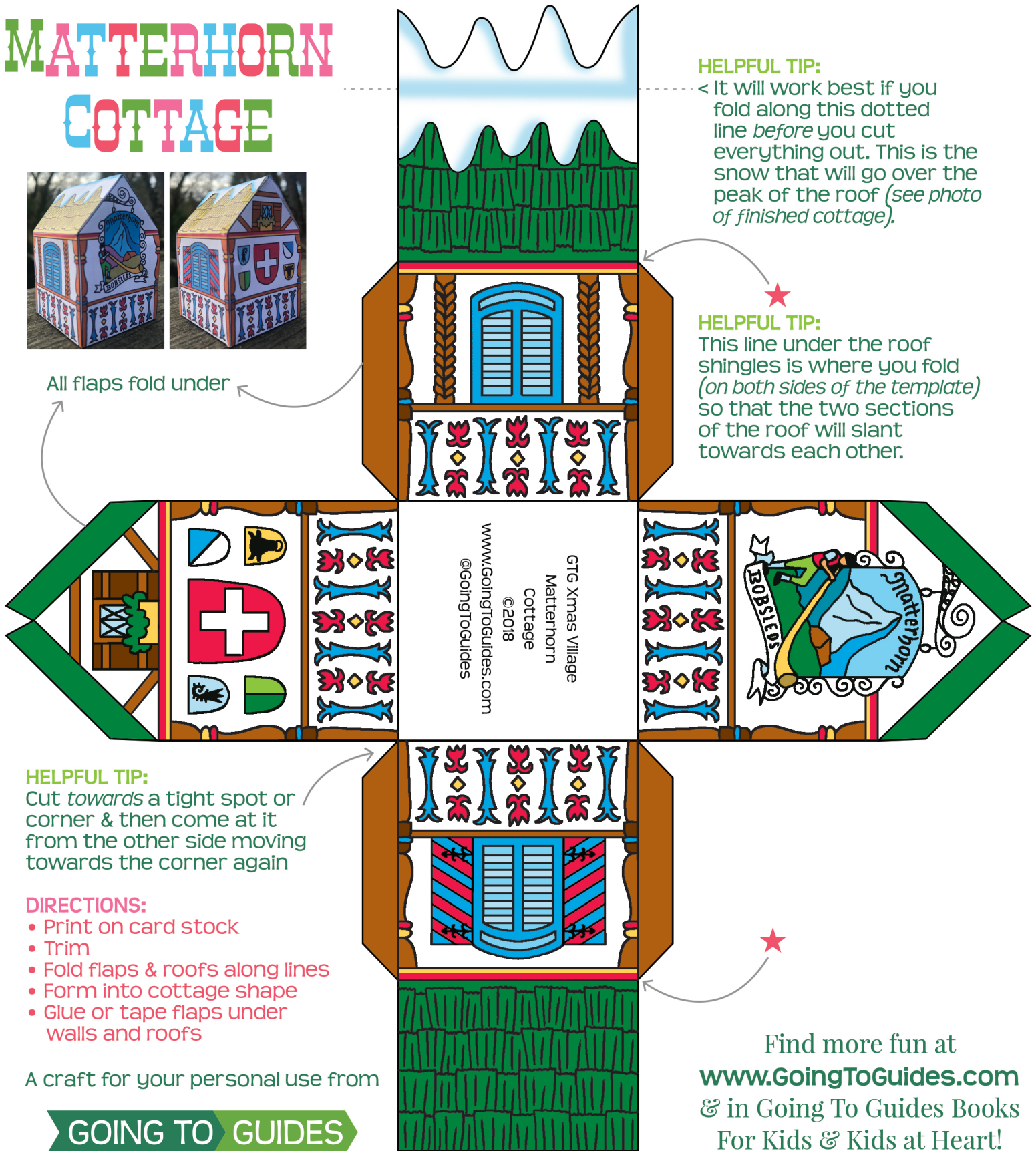
All flaps fold under

HELPFUL TIP:

< It will work best if you fold along this dotted line *before* you cut everything out. This is the snow that will go over the peak of the roof (see photo of finished cottage).

HELPFUL TIP:

This line under the roof shingles is where you fold (on both sides of the template) so that the two sections of the roof will slant towards each other.



HELPFUL TIP:

Cut towards a tight spot or corner & then come at it from the other side moving towards the corner again

DIRECTIONS:

- Print on card stock
- Trim
- Fold flaps & roofs along lines
- Form into cottage shape
- Glue or tape flaps under walls and roofs

A craft for your personal use from

GOING TO GUIDES

Find more fun at
www.GoingToGuides.com
& in Going To Guides Books
For Kids & Kids at Heart!

